

Calanus®

HYDROLYSATE LIQUID

PRESENTATION

Calanus® Hydrolysate is a naturally derived, enzymatically hydrolyzed protein from the marine zooplankter *Calanus finmarchicus*, the most abundant marine zooplankter in the Norwegian Sea and “the natural starter feed” to marine fish.

Calanus finmarchicus differs from many other marine organisms harvested today, both with regard to its ecological adaptation and biochemical composition. It is therefore the source of novel products with unique properties, including **Calanus® Hydrolysate** which has shown to be an ingredient with excellent properties with regards to aquaculture feed.

Calanus® Hydrolysate is an outstanding protein source and has shown to be an excellent flavor enhancer in marine feed.

It is an amber homogeneous liquid. Free of chemical or artificial preservatives.

BENEFITS

Calanus® Hydrolysate will improve your feed formula by increasing:

- | | | |
|--------------------------------------|---|--|
| - Feed Palatability | → | <i>Higher Feed Intake</i> |
| - Feed Nutritional quality | → | <i>Better FCR, Faster Growth</i> |
| - Feed Bioactivity properties | → | <i>Higher survival, Better Animal Health</i> |

According to your particular problematic, you might take advantage of **Calanus® Hydrolysate** benefits:

- As a **cost effective alternative solution** to substitute specific raw material like fishmeal
- As a **performance booster** in your premium feed range

NUTRITIONAL ANALYSIS*

PROXIMAL ANALYSIS

- | | | |
|-------------|---------|---|
| - Moisture: | 35-55 % | (CE N°152/2009, Dessication 103°C, 4 hours) |
| - Protein: | 30-36 % | (ISO 16634-1, Kjeldahl method) |
| - Fat: | 0-2 % | (CE N°152/2009, Hot acid hydrolysis) |
| - Ash: | 8-12 % | (Incineration 550°C, 8 hours) |

DIGESTIBILITY

- | | |
|-------------------------|--------|
| - Ileale digestibility: | 96,5 % |
|-------------------------|--------|

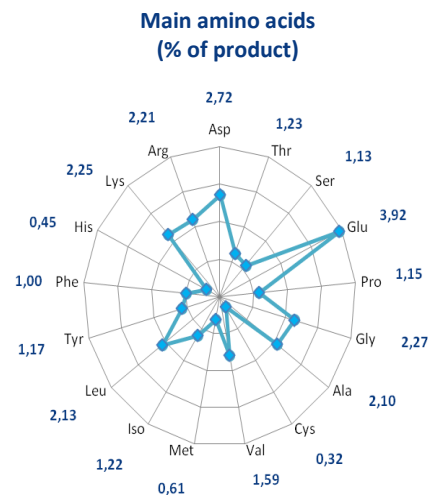
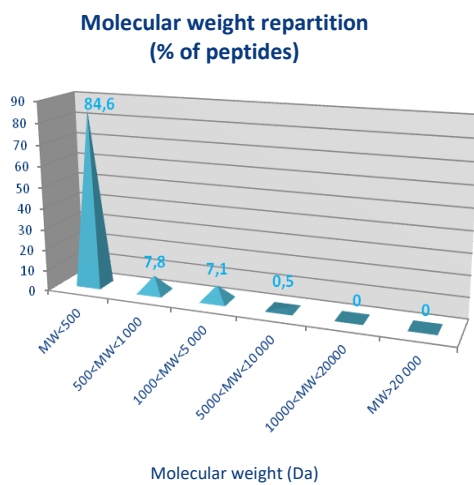
BACTERIOLOGICAL ANALYSIS

- | | |
|-------------------|-------------|
| - Salmonella: | abs/25g |
| - Enterobacteria: | < 300 CFU/g |

NUTRITIONAL ANALYSIS*

PROTEIN QUALITY

- Soluble Protein: **95 %** of total protein



**Indicative value*

RECOMMENDED USE

Calanus® Hydrolysate should be used in inclusion or coating. The dosage will depend on the targeted benefits.

Calanus® Hydrolysate should be stored:

- at low temperatures
- away from sunlight
- in original containers

According to the above storage conditions, the product remains stable 24 months from manufacturing date.

COMPOSITION

Calanus® Hydrolysate.